

HEADLINES



WELCOME

Hello everyone and welcome to the December edition of your favourite newsletter!

As we enter the final straight for this term, we have gathered together a selection of updates, news items and dates for your diary.

In the '**Working With Students**' section we have a focus on our new project-based approach to delivering the 'Independence Plus' curriculum.

Whilst the '**Working With Families**' section includes information about a new international research project we are very keen for families to participate in, there is some important information about **E**ducation **H**ealth and **C**are **P**lans (EHCPs).

You can read all this and more inside this bumper edition including our end of term Christmas arrangements - so let's get down to business and see what has been going on!



Our Remembrance Day design lovingly made by Pam Clapham from our domestic team.

Our newsletter is organised under 4 headings:

Working With Students
Working With Families
Working With Partners and
Working With Resources

We are always happy to include stories, articles and events from our families, and with that in mind our thanks to those who have contributed to this edition!

Best wishes, Rob and Kiran

DUKE OF EDINBURGH AWARD:

by Bill Adkins



It was great to chat about DofE on the recent family day. We have had a lot of interest so far and are looking forward to having students working towards Bronze, Silver and Gold Awards over the coming year. We plan to have evening training sessions after the Christmas holidays so please look out for more information on this. In the meantime, if you have any questions about any aspect of DofE including student accounts please contact Bill Adkins on Badkins@swalcliffepark.co.uk.

WORKING WITH STUDENTS



INDEPENDENCE : PROJECTS

We are delighted to share with you the exciting and enriching experiences our students have been engaged in throughout the Autumn term as part of their project work. This term, our focus revolved around two main themes: "**My Safety**" and "**My Future**."

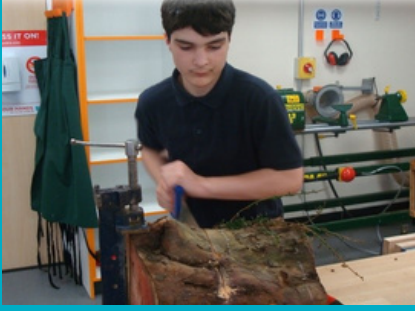
The Spring Term themes will focus on '**All About Me**' and "**At Home**."

KEY STAGE 3

Weekly Swimming and Bike Riding Sessions: Our students have been honing their swimming skills through weekly sessions, promoting water safety and physical well-being. Additionally, bike riding sessions have provided a fun and active way to emphasize road safety and the importance of protective gear. The students are gearing up to complete bikeability. Please see their website for more information: <https://www.bikeability.org.uk>

Online Safety Courses: In an increasingly digital world, our students have undertaken IDEA (Inspiring Digital Enterprise Award) online safety courses in digital awareness, Safety and ethics, tools and techniques which are useful in the workplace, digital creativity and how to build and make in the digital world to navigate the virtual landscape responsibly and with awareness.

Fire Safety: Practical learning has taken place through fire drills and an exploration of safe campfire practices, the students built campfires in our wooded area during their Outdoor Curriculum. Students gained invaluable knowledge on how to respond to emergencies and safely enjoy outdoor activities.



Science Lab and DT workshop Safety Awareness:

We all know how important it is to be safe in the laboratory and workshop. Students were given the task of identifying a set of rules for conducting experiments, using equipment, and ensuring they came out with all limbs still attached!!



Pedestrian Safety: Students went for a walk in the local village whilst learning how to stay safe using the pavements, understanding road signs and finding safe places to cross the road. It was important that this hard work was rewarded with some berry picking...and eating!!



Trip to Hazard Alley Interactive Safety Village in Milton Keynes: Who knew such a place existed?! This was a great trip out of school to engage in a variety of safety related activities. Everyone had an enjoyable time testing their safety knowledge through some challenging, interactive and fun activities. No one was hurt in the writing of this article!!

KEY STAGE 4

PSHE Lessons on 'County Lines' and Gang Culture:

In our PSHE lessons, students learned about what the Police call 'County Lines' which is all about how drugs are distributed and sold around the country using vulnerable people controlled by gangs. This backed up the presentation we had in school where an ex-gang member spoke to a group of students about their experience of being in a gang. Not an easy topic..... but our students responded well to hearing about the dangers of being groomed and getting caught up in gang culture.



Cycling Skills and Road Safety: As we know that so many of our students like riding bikes at school and at home, we thought it would be really helpful to assess their cycling skills and road safety awareness. We also made time for some supervised road experiences to ensure that they are confident and safe to ride on the road. If you would like to know more about what we did and any cycling certificates such as Bike ability please contact Andy Sears on asears@swalcliffepark.co.uk



Kitchen and Food Safety Lessons: Within our Food Tech room, students were learning to recognize and assess potential risks in the kitchen. This could be helpful during the Christmas holidays when there are some extra jobs to be done!



KEY STAGE 5 'My Safety'

Scam Awareness: We all know from listening to the news and people we talk to about how important it is to be "Scam Wise" – there is so much of it about!

So we spent some time looking into this and discussing what we already know and how we can prevent ourselves becoming victims. This was good for staff as well as students as we are never too old to learn about these things!

First Aid Certification: We are delighted to be able to tell you that eleven....yes eleven students successfully completed their Emergency First Aid at Work (EFAW) course and exam. This is a great qualification to achieve as it can help save lives and keep people safe...as well as being a useful skills to offer employers.

COSHH Training: Some students engaged in a version of COSHH training, focusing on the **C**ontrol of **S**ubstances **H**azardous to **H**ealth. This chemical safety training emphasizes awareness and safe practices when handling potentially harmful substances. This is incredibly useful and transferable at home or in the workplace.





Driving Theory Preparation: Every year we encourage students to work through the driving theory course, as driving is a great skill for life and Independence. This group on the left have just successfully completed modules in Hazard Awareness, Alertness, Attitude, Incidents & Accidents, Documents, and more. Preparations for the driving theory test are underway, with some students hoping to take the test next term. Well done all !!

Consent Education: As well as practical skills and strategies like those above, it is extremely important that we give time in the curriculum to some of the more social aspects of being part of a community. This includes the issue of consent in the context of sexual relationships. This is another issue which has received a large amount of news coverage in recent years and can be a tricky area for many young people to navigate. You can find out more about this in our Relationships and Sex Education policy, which underpins all the content we teach and discuss.

MY FUTURE: CAREERS WEEK HIGHLIGHTS

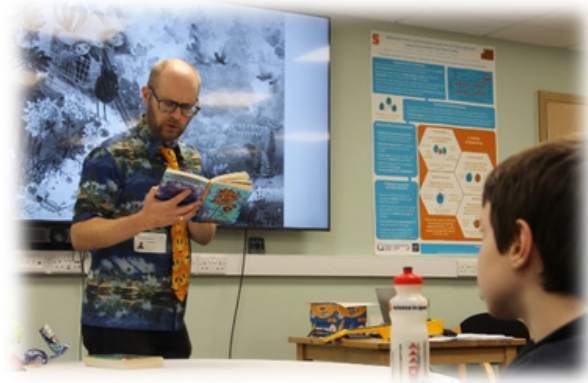
As part of the planning for futures, Les Robinson and the team co-ordinated a fantastic schedule of speakers and experiences for students during careers week. We are very grateful to the wonderful visitors who took time to share their expertise and stories with our students. Some highlights of the week are outlined for you here.

Science, Technology, Engineering, and Maths (STEM) workshop: Students engaged in a Thinkers in Education workshop, exploring ELISA (Enzyme Linked ImmunoSorbant Assay). As the name suggests this was a high powered medical science workshop which encouraged teamwork as well as providing insights into medical research. Our thanks to Thinkers in Education for delivering this insightful workshop.



Entrepreneurship in Enterprise Lessons: Creativity and business development skills came together as students produced beautiful pieces of resin art during enterprise lessons. These creations will be available for sale at the Family Day on Wednesday 20th of December, when there will also be a performance of our Christmas show. This was great fun and thanks to Jenny Rigby, our very own HR and Compliance Manager for showing us how to create great pieces of resin art and help us think about how we can sell them! Great presents for all the family so don't miss out - available at the Swalcliffe Christmas Market (please see details below)!

Career Pathway Exploration: Students engaged in self-reflection, investigating potential career paths and the necessary steps to achieve their goals.



Guest Visit from Jim Beckett: Renowned children's author (and part time elf) Jim Beckett, the creative mind behind "The Caravan at the Edge of Doom," visited our school. He delivered a writer's workshop to KS3 aligned with our reading curriculum, providing students with a unique opportunity to interact with the author.

Guest Speakers: Tom Ostrowski and Zon Projects: An inspiring visit from an ex-student, Tom Ostrowski, allowed students to learn about his journey to his dream job, emphasizing the potential within each of our students. Tom is working for Zon Projects, who are game-builders and they showcased their work, sparking interest and awareness of career possibilities.



College and Workplace Visits: Students visited Banbury College and Cafe Track in Northampton, gaining valuable insights into opportunities available in KS5 and beyond.

Employability Course: A group of students participated in an employability course, equipping them with essential skills for the workforce this includes, how to present yourself for interviews, preparation for first days at a job including understanding the induction process, appraisals and being a part of a team workforce. This ongoing course aims to be completed by the end of the term.



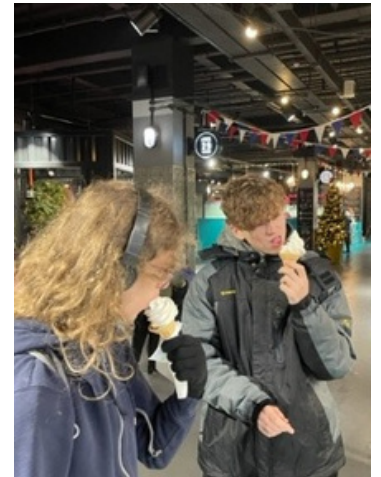
MY FUTURE: CAREERS TALK AT 'ROSES' OF BLOXHAM



Thank you Mrs Rose: The photograph above shows a group of students listening carefully to a talk by Mrs Rose about working in the hospitality industry. The main reason for the trip was to gain an insight into the different jobs on offer in the industry and think about how this could be helpful in choosing potential college and employment options. As well as this Mrs Rose gave shared her experience of running a small business and all the ups and downs of being self-employed. Unfortunately or fortunately the cocktail bar you can see in the photo was closed!!



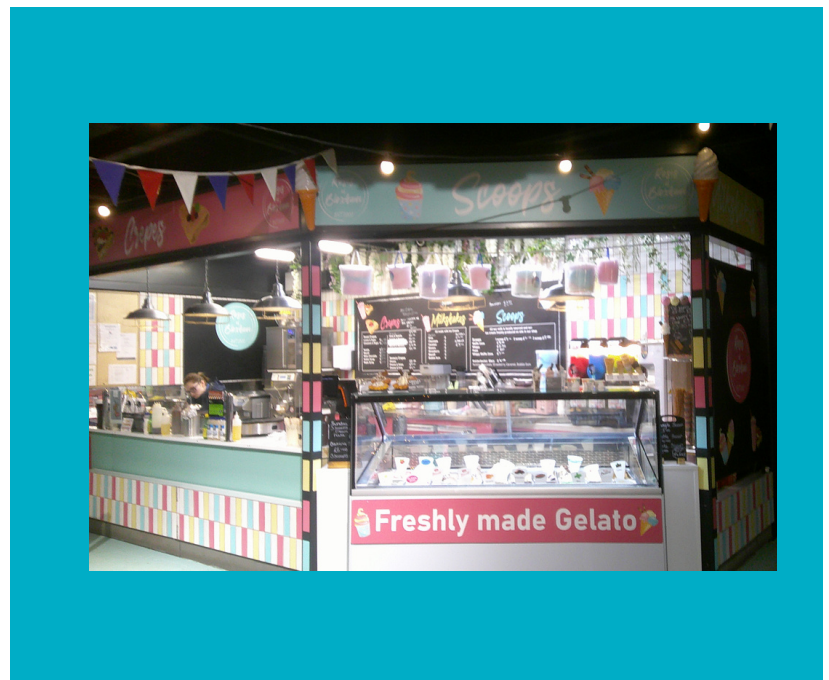
A highlight of the trip was the chance to make our own ice creams and crepes. This was great fun as well as allowing students to apply some of the knowledge gained talk. Here is Mrs Varney hard at work on the crepe wheel!!



Meanwhile back in school our very own Mrs. Varney shared her experience of working in the industry and the skills she has needed and acquired over time. The catering industry has been a popular choice for many of our students over the years and whilst it is hard work, it does lead to skills which can be used wherever you live and at very differing levels.



Exploring college and employment Options: The trip successfully exposed students to a range of college courses, apprenticeships, and traineeships within the hospitality and catering industry. This is really helpful for them when they are making decisions about their college courses and potential future careers.



ONLINE SAFETY

We came across this information for iPhone users and wanted to bring it to your attention. This is something that we have been making our students and staff aware of, to help keep safe online. We thought that it was important to share more widely so we hope this helps.

IMPORTANT INFORMATION: IOS17 Update for iPhone Users

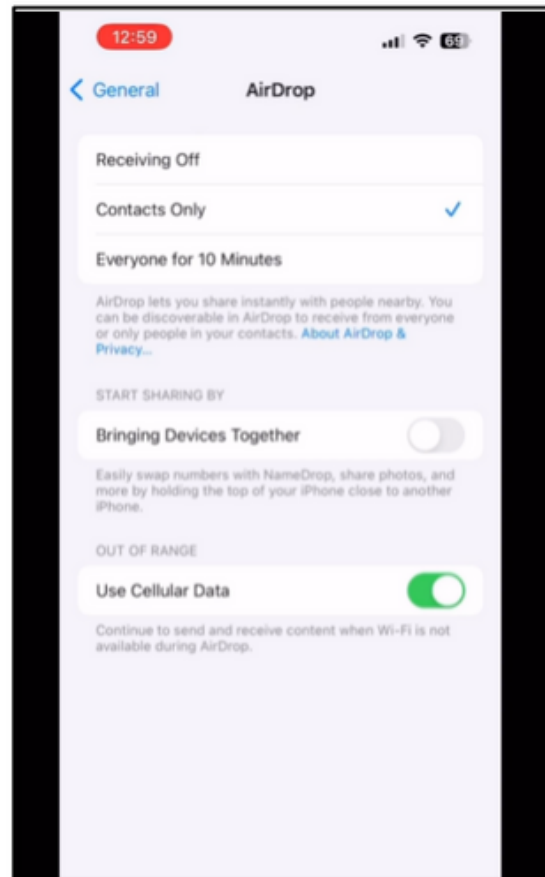
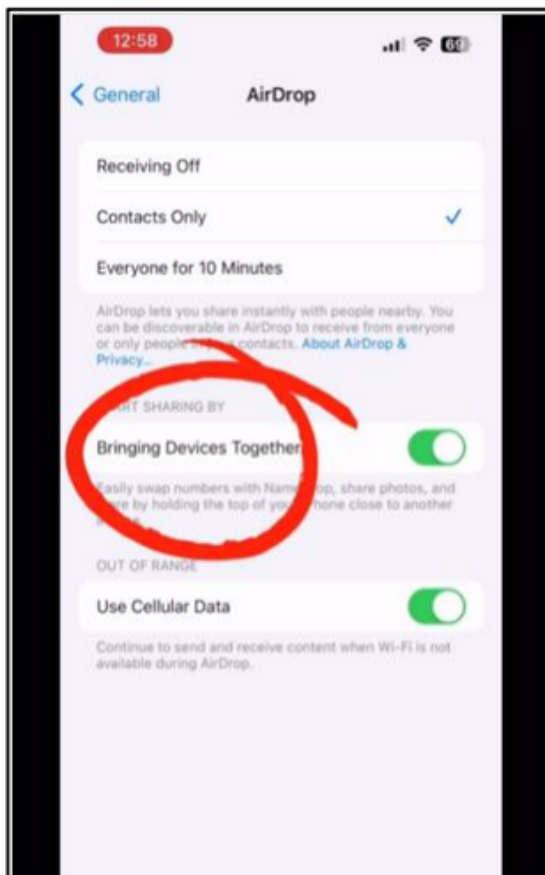
The new IOS17 update includes an automatic enabling of the Bringing Devices Together under the AirDrop feature in settings. This means that anyone within a proximity to your phone can transfer your contact details stored to their device. This compromises your own privacy, perhaps more importantly – your children's too. It's important that after downloading the update that you go into your setting and disable the Bringing Devices Together feature.

Here's how you do that . . .

Go into [Settings] → [General] → [AirDrop] → [Bringing Devices Together]

Disable

Bringing Devices Together



STUDENT COUNCIL

Steve Ciballi and Nicole Clark



We always like to include an update in the Headlines newsletter, because we feel that student voice is such an important aspect of school life. On the 11th of October we had our first student council meeting of the year and kicked off with an introductory session to discuss how the Council works, how often they take place, what goes on the agenda and who attends.

We discussed how Student Council had brought about a number of changes in school such as recycling bins, changes in menus, break and lunchtime activities, fundraising for charities. We then thought about some ideas going forward. Feedback from this meeting included a request for new football nets and goals on the top field and lawn outside Main House, as well as another goal being painted in the gym for younger students.

Going forward, all students will be invited to complete a questionnaire two weeks before the meeting to share their views on how they think the school could help improve their 'Quality of Life' or to share what they think is working well for them. Last year the students completed a total number of 217 questionnaires, which was a brilliant response, so thank you all students! The next meeting is scheduled for Wednesday 13th December.....thinking caps on please!



BANBURY FOODBANK

By Sixth Form Group, Tion, Oscar, Franco, Rory and James.



Here is a quick reminder about the ongoing Sixth Form Food Collection Project which started on 20th of November and will be running until 8th of December. We will be delivering the food to Banbury Foodbank during the week of 11th of December.....so it's not too late to donate!

Type of foods recommended as donations

Tinned and packaged food, including: Tinned meat, tinned soup, tinned fruit, tinned tomatoes, tinned vegetables, long life milk, long life juice, instant mashed potato. Please remember that we cannot accept any items that our beyond their use by date.

Many thanks for your support....and we will give you an update in the next edition of Headlines including what we collected.

CHARITY FUNDRAISING



Charity fundraising enables our students to chose charities that are important to them and then work together to raise money. We have been very lucky to have had two very successful fundraising events in school this term for two brilliant charities.

Orange group would like to express our gratitude to each and every one of you, with a special mention to our students who put in tremendous effort in baking, making key rings, and managing the cake sale today. All your enthusiasm and hard work made a huge difference. We also extend our thanks to Mrs. Varney, Manon, Michael for supporting our enterprise project and all staff who generously contributed by baking delicious treats for our event. Together, we have raised an impressive sum of around £263.86, which will go towards supporting the vital work of 'Young Minds' with young people.

Gold group would like to thank everyone of you for supporting our chosen charity Papyrus. The grand total raised is £358.04. The money you raised will go towards helping young people who are struggling with their mental health. This was a real team effort in true Swalcliffe style where everyone pitched in by baking and buying. Many thanks especially to Manon and Jane Varney for cooking with Gold group who have been planning this event (GCSE Action project) for some time and were passionate about raising both awareness and money, so thank you for helping us to make a difference!

GREEN POWER: OFF-SEASON DEVELOPMENTS

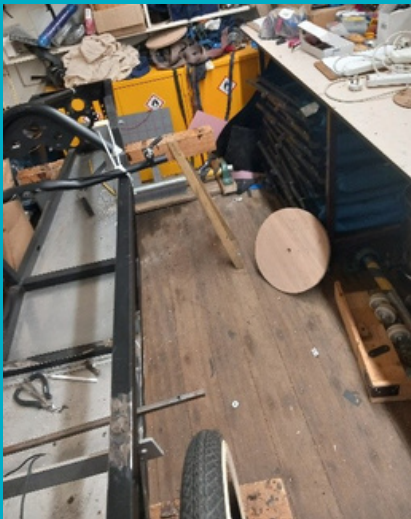
It is off season at present, and racing doesn't start again until March 2024. But that doesn't mean we have put our tools down....oh no...quite the opposite as this is a very busy time in the workshop!

Students have been redesigning the race cars with new bodywork and updated electrical systems to help improve performance. Two of our cars are undergoing a redesign of their body work, by the newer members of the team. They have chosen a different colour for next year and improved the aerodynamics to get a more streamlined body shape.

Toby C and Tion B have been working on a completely new car so they can enter the next category the F24+ races, which is set for 16+ year old boys to drive. This is still in it's early stages, but they are hoping to get the car ready for the first race in March.

This category allows the cars to be geared and have better electronic control systems.

They will be more aerodynamic having smaller wheels on the front compared to the rear, allowing a better, slimmer, lower front end to the car so they can achieve speeds of up to 35 MPH!!



INGENIOUS FALLEN WOOD PROJECT

by Toby C

Some adventurous students have bought some of the fallen trees into the workshop from the woods to prep and prime the wood, ready for it to be made into products. We chose to make a rustic trailer. They measured accurately where to cut and got to work. Josh helped make some sanding blocks for the group and then sanded the wood to perfection. Once we had all the pieces it was time to assemble them with brass screws and wood glue. We all got to work with expert supervision!

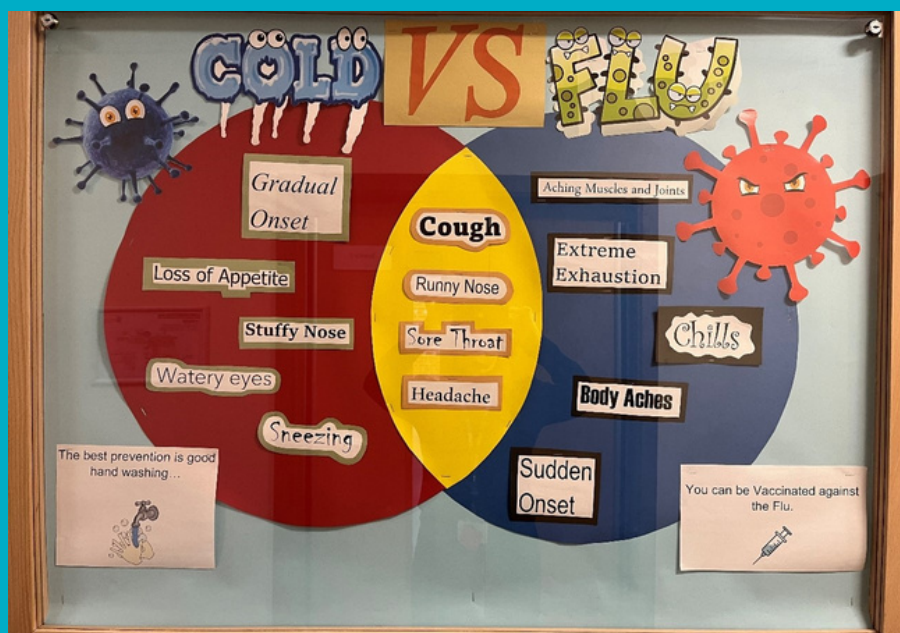
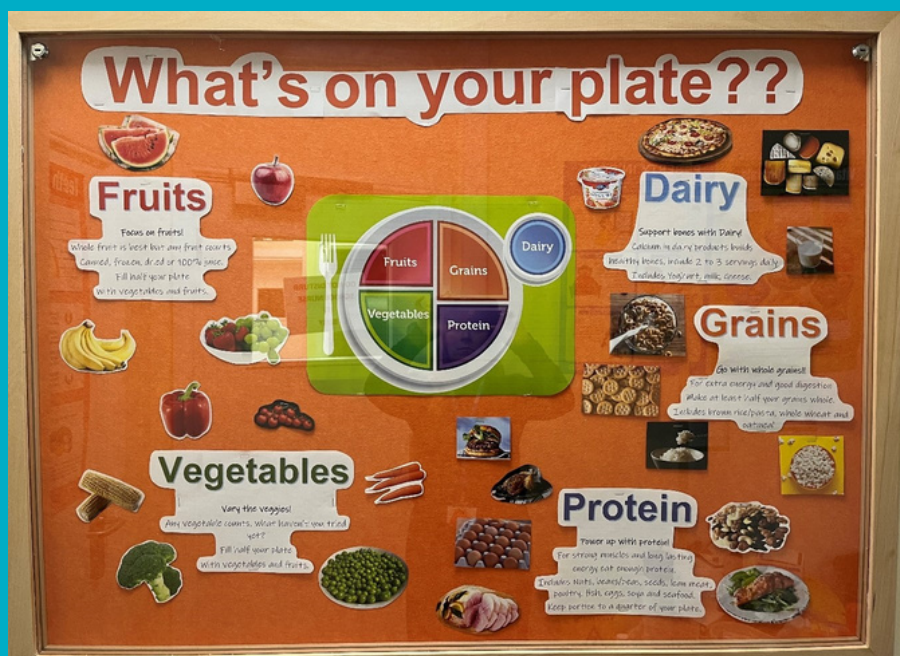
After a few hours, we got the body finished but still needed to get the wheels on and varnish it. Four smooth wheels were added, several coats of varnish and a few decorations. The fabulous, finished product looked great!

Another group decided to use the wood they had foraged to create goblets, chalices and seasonal table decorations. We had to take the enormous logs and accurately and carefully use some serious effort to cut them down to the right size. We worked hard to saw, chisel, carve and sand the wood to make the correct shapes we needed. We chose different methods to create our pieces, one was made by attaching three separate pieces of wood together. Another was hewn from one piece of wood. All of the projects are going to be fantastic when finally finished.



HEALTH INFORMATION BOARDS

Thank you to Chrissy and Leila, our School Health Care Team who have put together some informative noticeboards with advice for keeping yourself healthy and symptoms to look out for with winter bugs.



AUTUMN TERM EXAMINATIONS

by Dean Moulder (Exams Officer)

In November 2023 we had a successful exam series, including GCSE and Functional Skills English and Maths exams. The results will be available on Thursday, January 11th, 2024, at 8:30 am through the Parent Portal for those who sat the exams.

Exam Pathways

If you want to see the qualifications your son will complete in 2023-2024, please refer to their 'Achievement' report which you can find on the Parent Portal. The 'Pathway' for each subject in this document identifies the intended year of completion.

January 2024

Functional Skills English and BTEC Nationals exams will take place in January 2024, alongside mock exams for all Summer 2024 series entrants. Mock exams will start in the first week back at school in January, after the Christmas break. Morning exams for mocks will begin at 9:30 am to avoid travel issues with taxis. However, students with live exams will start at the usual 9:00 am time and this will be indicated on exam timetables. We follow JCQ examination standards for mock exams, which guarantees that all students undergo a genuine exam experience, preparing them for what to anticipate during the actual exams. While we include every subject in our mock exam series, we conduct fewer exams than in a full series, as we are mindful of striking a balance between academic rigor and the necessity to uphold a manageable workload. Teachers and Keyworkers are assisting students with revision techniques, plans and exam-related anxiety. For revision queries, contact the relevant subject teacher.

Exam Timetables and Reports

Visual, calendar-style exam timetables for January 2024 will be available on the Parent Portal on December 20th, alongside end-of-term reports.

February/March 2024 Exam Series

Functional Skills English exams will occur in February 2024. Dean Moulder will contact you in 2024 if your son is involved.

Summer 2024 Exam Series

Although we anticipate exam entries to align with the pathway in your son's Achievement Plan, changes may occur. After the January 2024 mock exams, we will collaborate to finalise entries for the Summer 2024 series.

Ofqual Update

[Ofqual has confirmed](#) the completion of the two-year transition to pre-pandemic grading. Normal grading arrangements will continue for GCSEs, As, and A levels in 2024. [Additional support materials](#), such as formulae and equations sheets, will be provided in Maths, Physics, and Combined Science exams.

Contingency Days for Summer 2024 series

Exam awarding bodies have designated the afternoons of June 6th and 13th, and the morning and afternoon of June 26th as contingency days in the Summer 2024 exam timetable. These days will be used in case of local or national disruption to the exam series. All Summer 2024 series exam candidates must be available on these dates.

Results days for 2024

Exam Series	Results Day	Qualifications	Time released to students (and parents)
November 2023	11/01/2024	GCSE, Functional Skills	8:30am
January 2024	29/02/2024	Functional Skills`	8:30am
January 2024	21/03/2024	BTEC Nationals, BTEC Firsts	8:30am
March 2024	11/04/2024	Functional Skills	8:30am
June 2024	15/08/2024	GCE A Levels BTEC Nationals Functional Skills English	8:00am
June 2024	22/08/2024	GCSE International GCSE Entry Level Science AQA Level 1 Foundation and Level 2 Higher Projects BTEC Firsts BTEC Technicals	8:00am

Accessing exam results

Please see the attached file titled **Exam results 23-24 powerpoint parents** which provides a guide on how to access examination results.

All students completing exams have had the following presentation shared with them. Please see the attached file titled **Exams 2024 presentation to students** to review this presentation.

Further support and information is available from the academic team. Please find contact details below and do not hesitate to contact us should you have any queries or questions.

Exam regulations and results - Dean Moulder (dmoulder@swalcliffepark.co.uk)

Access arrangements - Denise Barstow (dbarstow@swalcliffepark.co.uk)

Exam support and pathways - Andy Sears (asears@swalcliffepark.co.uk) / Lotty Dee-Andrew (ldee-andew@swalcliffepark.co.uk)

Transport - Maggie Cowley (mcowley@swalcliffepark.co.uk)

Family Quality of Life.... more good news sharing!

We always like to include some of the comments from the Family Quality of Life section in the Autumn Term Annual Review reports. Naturally, these are lovely comments for us to read, but most importantly they are the result of collaborative working between home and school, through a combination of QoL surveys, keyworking and regular communication.

WORKING WITH FAMILIES

He has become kinder and more loving to his mum, learnt to care.

He eats a wider range of food, which has helped with going out and going on holiday, in the last year he has started to eat something other than chicken nuggets when we go out.

He continues to go to the shops to buy his own snacks, water and can occasionally be persuaded to buy practical items needed by the family – any issues here now feel like ordinary teenage bloody-mindedness rather than autism-specific difficulties thanks to the strategies he's learned in his independence sessions at school

There is more calm at home. We can achieve more at work, in managing the house, in our relationships with others.

Shopping trips have been far more relaxed, and he has been known to be happy to go, not become agitated when there or focused on when we are leaving.

He has further developed his patience and level of support to his younger sibling.

He has cooked for our family and loves sharing his recipes.

The good reports and accolades and his recent exam achievements seem to have given him a drive-in school to work harder and apply himself but have more than likely aided in some self-belief and self-confidence.

We will keep sharing Annual Review comments like those above as they are fabulous illustrations of improvements in 'Quality of Life' and provide powerful evidence in Annual Review reports. Thank you for sharing them with us and to all parents who completed their October QoL surveys, your input really helps keyworkers to have a full understanding of how things are at home. The next survey will be in **December**. Please check your emails.

Please do not hesitate to contact your keyworker for support if you have any concerns or thoughts about areas of focus for this term or how we might be able to support Family Quality of Life.

EHCPS

Beware of incoming **E**ducation **H**ealth and **C**are **P**lans (EHCPS).....but don't be alarmed!

We are bringing this issue to everyone's attention as we are aware that some LAs are unilaterally changing some of the wording in EHCPS following Annual Reviews meetings. This could be aspects of provision, **end dates** for **outcomes** and even placement name. Please can we ask all families to do the following:

1. Log the date you receive the draft Plan so we can check that this is within the prescribed window of being within 4 weeks of the Annual Review meeting
2. Check the wording in every section against your previous version
3. Let us know as soon as you receive your draft EHCP as we may not receive a copy
4. We don't wish to cause unnecessary alarm but we all need to be vigilant as LAs struggle to operate within their limited budgets.



FAMILY MENTORS

This year we are looking to introduce a more formalised mentoring system for those families who are about to join our school community and to support them through their first term. It is easy for us to forget or underestimate the anxiety joining a new school can cause as well as all the information you need to absorb. So we thought that developing a group of family mentors would be a helpful support option for new families to have. This would include chatting through issues such what to expect from particular members e.g. keyworkers, tutors and residential team leaders.

It could also include a whole range of practical advice on issues such as Progress Days, Annual Reviews and medical matters. Naturally the school will continue to play it's role in new family induction, but we feel that having a mentor who has been through the process would also help.

We are looking to put together a small group of interested family members who will work with us on this task and potentially develop some useful information tips and thoughts to include on the website. If you are interested in this, or would like further information, please contact Chris Heslip, Vice Principal on cheslip@swalcliffepark.co.uk



Working with Students

My QoL

- All about me
- What makes me happy?
- What I want to do



Working with Families

Our Family QoL

- All about us
- What makes us happy?
- What we want to do



RESEARCH PROJECT - WE NEED YOUR HELP!

International research project: As you know, we are always keen to contribute to current research projects and have a longstanding relationship with Prof. Valsemma Eapen at the University of New South Wales, Sydney. We have joined in previous projects with her and her team of international collaborators and would like to share with you details of a new project that we would like your help with.

We would be very grateful if you could find 20 mins to complete a short survey. We will also be asking keyworkers to fill one in from the school perspective.

This study will collect information that will contribute to a wider research project focused on improving the educational experiences of autistic children & Young People in school settings. We believe that your participation will ultimately benefit not only your young person but also other autistic young people in the educational system.

This research involves collecting information from you and your young person's keyworker about their strengths and needs. We are asking for consent for your participation and permission to use the keyworker's views in the study. You can **read the letter from Prof Eapen** which gives the background to the project via the attached file titled **QoL_letter_UNSW**.

We are looking to collect all our completed surveys by Friday 8th December. We will be in touch in the coming days with the survey.

As usual Poppy will be leading the project on our behalf and liaising with Valsa and her team, but if you have any questions or would like to know more details, please contact Kiran on khingorani@swalcliffepark.co.uk or Poppy on pgrimes@swalcliffepark.co.uk

INDEPENDENCE PLUS

The 'Independence Plus' curriculum has been written to address many of the issues raised by students and families which impact on their 'Quality of Life' and we are delighted with the way our new arrangements have worked this term. Taking a whole school approach means that we can work more collaboratively and effectively in school, and we also hope it is helping families to feel that they can also participate in developing independence skills and collecting evidence of progress.

We will also be asking families to help us assess where their young person is in relation to the end of key Stage outcomes and will include this information in End of term reports. If you would like to know more about any aspect of the 'Independence Plus' curriculum please ask your keyworker or Tony Burtenshaw, QoL Manager, on tburtenshaw@swalcliffepark.co.uk. A reminder that you have been sent the QoL Questionnaire for family completion and your engagement with this would be much appreciated.

You can see the sets of indicators for each of the Independent Plus sections in the curriculum, for each Key Stage, by reviewing the **additional pdf documents** titled: **New Independence Record**.

PROSPECTIVE PARENT AFTERNOON - VIRTUAL SESSION

Our prospective parent afternoons continue to be well attended and our next event will be held on **Wednesday 13th December 2023** at 13:00, so if you know of anyone who would like to attend, please ask them to contact Rachel at admin@swalcliffepark.co.uk. Please note that as usual, this will be an online event to avoid disruption to the smooth and efficient running of the school.

Virtual
Open
Afternoon

MEDICAL

by Chrissy Stevenson

Family guide to student medication in school

Here is a gentle reminder of the guidance about medication in school for anyone new or who might have missed it. This is extremely important as there are strict legal guidelines that we need to adhere to as part of our registration:

1. All prescribed medication must be sent in its original pharmacy-labelled container/packaging, be in date and the label must be clear with the correct directions named for the student. It cannot be sent in strips and sachets without any of the above details. We are sure you will appreciate that staff need to know for legal reasons what they are administering.
2. Medication should not be transferred from one container/box to another, as they may have different expiry dates.
3. We can only accept prescribed medicines supplied by the prescriber i.e., CAMHS/GP/pharmacist.
4. Vitamin supplements are allowed in school these will also be stored and kept safe in the medication cupboard in the staff office on the houses.
5. For those students who take ongoing medication, please make sure we have enough supplies in the school. Staff will check how much we have and contact home when supplies are running low, to allow time to organise repeat prescriptions to be sent in and collected.
6. All medication must come into school in the care of an adult. Family members are welcome to bring medication in personally or with a taxi escort. It is important that someone in school is made aware that your son has brought in medication, so it can be collected and stored safely.

We are not able to administer any prescribed medication if our procedures are not met, and although this can be upsetting and frustrating, we hope you can understand that we need to follow best practice medicines guidance alongside the legislative requirements on administering medications safely.

School clothing....a friendly reminder

The weather is getting colder and wetter! So please remember students need to come to school properly dressed for the weather e.g. hat, gloves, scarf/neck warmer and a proper winter jacket. We will continue to encourage students to go outside for breaks and PE even in the coldso let's get ready for it and please remember to LABEL EVERYTHING!

Flu Vaccinations

The Oxford Health Immunisation Team will be visiting the school on the **7th December 2023** to carry out the nasal spray Flu vaccine to students who have consented from Years 7-11. Thank you to everyone for completing the forms. If you would like to know more about this or have lost your form please contact Chrissy on cstevenson@swalcliffepark.co.uk

TERM DATES

The school will break up for the Christmas holiday on Wednesday 20th December 2023, which will also be a 'Family Day' in school.

Students will return to school on **Monday 8th January 2024 at 11:00am**. Please ensure your taxi company is aware.

December Festivities

Christmas Jumper Day - 7th December 2023

This will be a non-school uniform day. Students are welcome to wear their favourite festive outfit/Christmas jumper. This is in aid of the charity 'Save the Children'. Any small donations will be collected by tutors, on the day, which the school will then donate to the charity on behalf of the students.



Santa Fun Run & Student and School Christmas Dinner - 15th December 2023

The Katherine House Hospice 'Santa Fun Run' will be an optional 5km walk, jog, run for staff and students following a designated route. Santa hats will be provided by the school. Please remember your running shoes and something warm to wear! The Santa Fun Run will be from 11.30am until 1pm. Christmas dinner for students and staff will follow at 1pm.

Charlie and the Chocolate Factory, Christmas Family Day & last day of term - 20th December 2023

Families please arrive on site from 10.30am. Charlie and the Chocolate Factory' Christmas show will start promptly at 11am. There will be light refreshments provided after the show. The school day finish time for all students will be 15:10. However, students can leave from 12.30 if families are attending the show. If you no longer need your taxi, please remember to let your taxi company know.

Autumn Term 2023	
Quality of Life network Workshop	Tuesday 28 th November (online) at 11:00am
Christmas Jumper Day	Thursday 7 th December
Virtual Open Afternoon	Wednesday 13 th December (online) at 13:00pm
Santa Fun Run	Friday 15 th December at 11:30am
Christmas Lunch	Friday 15 th December at 13:00pm
Christmas show	Wednesday 20 th December 2023 at 11:00am
End of Term	Wednesday 20 th December 2023 at 15:10pm
Spring Term 2024	
Start of Spring term	Monday January 8 th at 11:00am
Progress Day KS3	Wednesday February 7 th 2024 at 14:00pm
Family Day	Thursday February 8 th 2024
End of Spring Term 1	Thursday February 8 th 2024
Spring Term 2 starts	Monday February 20 th 2024 at 11:00am
Progress Day KS5	Wednesday February 21 st 2024 at 14:00pm
Progress Day KS4	Wednesday February 28 th 2024 at 14:00pm
Pathways Day	Thursday 27 th March 2024 (online)
End of term	Thursday 27 th March 2024
Summer Term 2024	
Start of Summer term	Monday 15 th April 2024 at 11:00am



Swalcliffe Park School 'Christmas Show' presents...

WILLY WONKA & THE CHOCOLATE FACTORY



We would like to welcome you to watch the production of 'Willy Wonka & The Chocolate Factory' on Wednesday 20th of December 2023!

FRONT GATES open at 10.30am.

THE MAIN EVENT begins at 11.00am. SHARP!

There will be an interval of 15 minutes for a refreshment break. There will also be light refreshments available after the show.

THE END at 1.30pm





WORKING WITH PARTNERS

WHAT'S GOING ON WITH THE QOL NETWORK?

Please see the attached QoL Newsletter.

If you know of any schools, colleges or children's homes that may be interested in joining our network, please feel free to pass on my details so they can email me on khingorani@swalcliffepark.co.uk

TIME TO ACT!

Did you know autism is still considered a 'mental disorder' according to the Mental Health Act? Don't miss your chance to put pressure on the Government to change this and help end the inappropriate detention of autistic people in mental health hospitals. You can have your say by clicking on the link below: [Breaking news | Autism Central | Time To Act \(nas-email.org.uk\)](#)



Sponsored event

Sami Johnstone (mum of Seb Radford) is training hard to run the 2024 London Marathon in aid of the National Autistic Society, if you would like to donate please follow this link to Sami's JustGiving page is www.justgiving.com/fundraising/samantha-johnstones

SWALCLIFFE VILLAGE CHRISTMAS MARKET

This weekend, Swalcliffe Village is holding their Christmas Market at Swalcliffe Church. KS3 students and staff have been working hard to create items to sell at their stall at the market and we look forward to joining the local community. Please do come along and support, get into the festive spirit and buy some of your Christmas presents.



SWALCLIFFE CHRISTMAS MARKET

Saturday 2nd December 2023

At Swalcliffe Church

From 12 noon to 3:30pm

Swalcliffe is the place to be as the village hosts
another exciting Christmas Market

Come and enjoy:

Market stalls with local traders featuring an impressive
array of crafting skills and products

• Raffle with luxury Christmas Hampers

Popular German Currywurst stall

Entrance fee £2.50 (children go free)
card payments available, but please bring cash too

All proceeds will be shared between three Swalcliffe
community causes & projects:
Swalcliffe Church, Swalcliffe Community
Hall, and the Woodland Play Park



www.swalcliffe.org

NEW QOL WEBSITE

We are hoping our new QoL network website will be up and running by February half term 2024. This will be a place to find background information on the origins of our QoL approach as well as how other schools in our network are developing and sharing their own best practice. www.qol.org.uk

PROMOTING READING ACROSS THE SCHOOL

It was wonderful to welcome families to our Parent Forum, which took place on Wednesday 29th November. The focus of the session was on Literacy and Reading and led by Denise Barstow (Assistant SENCo and English Curriculum Lead). Please see the attached file from the session, titled **Literacy and Reading PPT Version** which we encourage you to take a look at.

Our lovely new library and the café reading room are now finished and being made good use of by students throughout the day. It's brilliant to see our students accessing the magazines, books and comics during their break times.

SITE NEWS

The school car pool has been updated with four new cars added to the transport pool and already in use. The long running jobs of roofing repairs have now been completed across site and the perimeter drystone wall repairs have now been completed.

As always....we have staff news!

Please see the table below for staff who have left us recently and those who have joined. As ever we wish everyone success and happiness in their new roles.

Leavers & Transfers to Bank/Casual Role	Leaving Date	Notes
Pam Clapham	31/12/23	Retirement after 29 years' service in Housekeeping & Catering teams
New Starters/Transfers to new roles/promotions Role	Start Date	
Chris Haines	09/10/23	LSA KS5 – returning member of staff
Karen Ruck	13/11/23	LSA to Therapy Support Worker, Clin Psych Team
New appointees – on boarding checks in progress Role	Scheduled Start Date	
Lin Englishby	01/01/24	LSA KS3-4 to replace Karen Ruck's appointment to TSW role
Oliver Ball	08/01/24	Senior Maths & Science Teacher cover fixed term contract 2 terms

Swalcliffe Park School Term Dates 2023-2024 Students

2023-24	M	T	W	T	F	S	S	M	T	W	T	F	S	S	M	T	W	T	F	S	S	M	T	W	T	F	S	S	M	T								
September					1	2	3	4	5 11 a m	6	7	8	9 IN	10 IN	11	12	13	14	15	16 OUT	17 OUT	18	19	20	21	22	23 IN	24 IN	25	26	27	28	29	30 OUT				
October							1 OUT	2	3	4	5	6	7 IN	8 IN	9	10	11	12	13	14	15	16	17	18 PDKS3	19 FD	20	21	22	23	24	25	26	27	28	29	30 11 a m	31	
November			1 PDKS5	2	3	4 IN	5 IN	6	7	8 PDKS4	9	10	11 OUT	12 OUT	13	14	15	16	17	18 IN	19 IN	20	21	22	23	24	25 OUT	26 OUT	27	28	29	30						
December					1 IN	2 IN	3	4	5	6	7	8	9 OUT	10 OUT	11	12	13	14	15	16 IN	17 IN	18	19	20 SHOOW	21	22	23	24	25	26 BH	27 BH	28	29	30	31			
January	1 BH	2	3	4	5	6	7	8 11 a m	9	10	11	12	13 OUT	14 OUT	15	16	17	18	19	20 IN	21 IN	22	23	24	25	26	27 OUT	28 OUT	29	30	31							
February				1	2	3 IN	4 IN	5	6	7 KS3 PD	8 FD	9	10	11	12	13	14	15	16	17	18	19	20 11 a m	21 PDKS5	22	23	24 IN	25 IN	26	27	28 PDKS4	29						
March				1	2 OUT	3 OUT	4	5	6	7	8	9 IN	10 IN	11	12	13	14	15	16	17	18	19	20	21	22	23	24 IN	25 IN	26	27 P/w a y	28	29	30 BH	31				
April	1 BH	2	3	4	5	6	7	8	9	10	11	12	13	14	15 11 a m	16	17	18	19	20 OUT	21 OUT	22	23	24	25	26	27 IN	28 IN	29	30								
May			1	2	3	4 OUT	5 OUT	6 BH	7	8	9	10	11 IN	12 IN	13	14	15	16	17	18 OUT	19 OUT	20	21	22	23	24	25	26	27 BH	28	29	30	31					
June				1	2	3	4 11 a m	5	6	7	8	9 IN	10 IN	11	12	13	14	15	16	17	18	19	20	21	22 IN	23 IN	24	25	26	27	28	29	30	31	29 OUT	30 OUT		
July	1	2	3	4	5	6 IN	7 IN	8	9	10	11	12	13 OUT	14 OUT	15 RES	16 RES	17 RES	18 RES	19 FD/LD	20	21	22	23	24	25	26	27	28	29	30	31							
August			1	2	3	4	5	6	7	8	9	10	11	12	13	14	15	16	17	18	19	20	21	22	23	24	25	26	27	28	29	30	31					

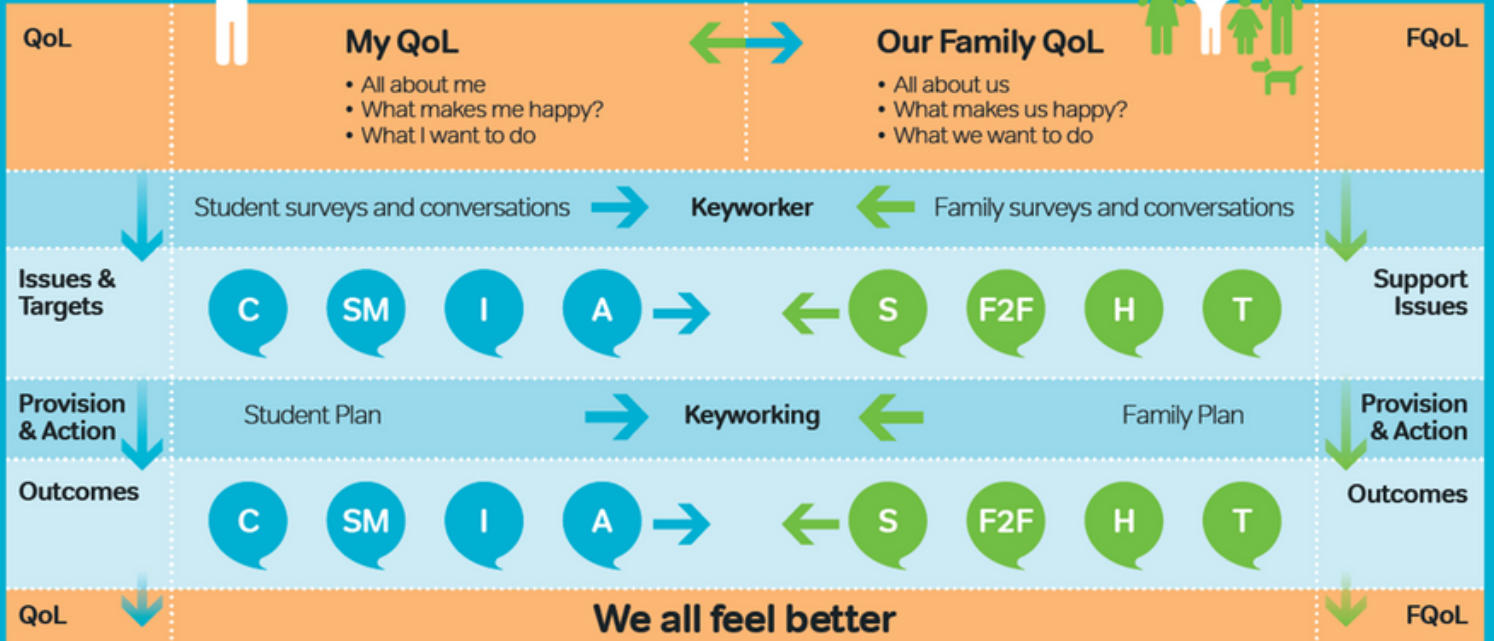
Listening to students and their families to improve 'Quality of Life' outcomes

V2



Working with Students

Working with Families



Curriculum, operational and strategic planning

The innovative quality of life framework you have developed has a positive life-changing impact on pupils and their families.

Ofsted July 2019

Well, that's it for this time and we hope you enjoyed catching up on what has been going on and please remember that if you would like to share any information, websites or stories through Headlines please contact Kiran at khingorani@swalcliffepark.co.uk we really would love to hear from you.

Rob and Kiran

