

Headlines and Footnotes

Summer Term 2023: Edition 2



Introduction

Welcome one and all to a very summery edition of Headlines. The sun has finally decided to make an appearance and I hope you are able to enjoy it in whatever way suits you. As I write we are well into the summer exam series as well as preparations for our end-of-year residential trips and family fun day. The second half of the summer term is always a busy one in school as we are also making plans for September in terms of timetabling, class groups and residential houses. These will be shared with families before the end of term.

We hope you find that this edition has the usual wide variety of news, achievements and diary dates to keep you informed and up to date on school life.

With best wishes to all and we look forward to seeing you on July 14th!

Rob, Rob and Kiran



Working With Students

Duke of Edinburgh's (D of E) Award: by Bill Adkins



D of E expedition season is now well and truly under way! We kicked off with the 'Bronze' group practice walk and this was the first time the boys had done anything like this, so it was a big learning curve. The boys completed the two-day walk and overnight camp in preparation for their qualifying expedition.



Meanwhile the 'Silver Award' group have also been busy...

.....their expedition was based from Youlbury scout camp in Oxford. Unfortunately, as you can see from the pictures, the weather was not as kind to us, and they had heavy rain to deal with. However, spirits weren't dampened and they took it all in their stride, completing the weekend by pulling together and demonstrating great teamwork.



...



Bronze group final expedition

This was what the group had been working towards and a chance to show the skills they had learned along the way. Again, we were blessed with lovely weather, and everyone had a great weekend. Demonstrations of teamwork were there for all to see when putting up all the tents, which was something they struggled with during the practice expedition. The group have now successfully completed their expedition section and now just need to finish off their other sections to earn their 'Bronze' award. Congratulations to all concerned and keep up the good work!



If you would like any more information, please contact Bill at Badkins@swalcliffepark.co.uk or ask to speak to one of the DofE team.



Llama Walking: by Jessica Doige

We took GB, EW, EK-H, JJ and HC on a Llama trek, at Catanger Llamas, near Towcester. We arrived early and had a picnic overlooking the 'Maternity' paddock this was a great way to start our day out as we were so lucky to see a 3-day old baby!

We went on the trek and everyone had the opportunity to lead a llama. We were given instructions about how to handle them, including being reassured that they only ever spit at humans if they are feeling threatened! Safe to say none of our Llamas spat at anyone! Our lovely group of llamas, in the picture below, included Emoji, Waffle, Grappa, Barnaby and Idris. We went for a beautiful walk around the woods and saw the yearlings, who were really sweet and very lively!



It was a really wonderful walk and great fun....and perhaps most importantly we all managed to hang onto our llamas without them running off!



We decided to 'Go Ape'!

by Bill Adkins

A group decided they wanted to visit 'Go Ape' at Coombe Abbey, near Coventry. They completed a series of tree top challenges, some zooming around with absolutely no fear and bags of enthusiasm and while others were a little more cautious (staff included!). Very well done to HC and RW for managing to have a go and complete the challenges, despite being terrified of heights. They were both amazing!! After the tree top challenges, it was time to relax and what better way to chill out than sitting in the sunshine with an ice cream!



Jumping for joy! by Justine McDonnell

As part of our self-management focus, students from across the school joined in a range of activities inspired by 'sports day' themed games. They enjoyed egg and spoon races, sack races and completing an obstacle course which targeted their praxis, strength, agility, visual perception, team working, distress tolerance and overall emotional regulation. What a fun way to learn about self-management!





Wearing it Green: [by Aida Walsh](#)

KS3 students showcased their enterprise skills, by getting involved in the 'Wear it Green' event to raise funds for the Mental Health Foundation charity. They not only baked delicious biscuits but created some ribbon keyrings specially for the event. On the day, they sold the delicious bakes and managed all the money they took, either in cash or through card payments, using the 'SumUp' card reader. I am delighted to say that their customer service was outstanding....and we have some talented future business traders in our midst!

Oh...and in case you were wondering.....we managed to raise £310.00 for this very good cause. Our thanks to everyone who supported this event.

The picture below shows JJ and SB and the fabulous selection of bakes, with Lucy Baird in the background.



Mental Health Awareness Week





The Wear it Green Team had no shortage of customers with JL, SR and EA trying to choose between the delights...



SB was ready with our card reader to take electronic payments alongside cash receipts.



SS opts to buy the delicious mint and chocolate cake



Ah....and we mustn't forget, the beautiful display to commemorate the mental health event which was put together with help from 'Turquoise' tutor group.



A fantastic journey....virtually!: by Aida Walsh

KS3 students went on a journey of discovery through Virtual Reality (VR), to learn about ocean creatures. They learned about coral reefs, jellyfish and other amazing creatures that live in the depth of the oceans. We are all concerned about the state of our oceans and the influence humans have on upsetting the natural habitat of so many amazing creatures through pollution, plastics and climate change. Seeing



all the animals and how they live really helped to bring it home how we must take care of the oceans or their lives will be put at risk.

This was an amazing experience, bringing the ocean to the classroom....so if you ever get the chance to do something like this.....our advice is.....we recommend you take it!!!



Student Council: by Steve Ciballi

Thanks to the efforts of the Student Council and the maintenance team, Rob Leigh can once again enjoy his favourite activity on-site.



Let's hope the students enjoy it half as much as Rob does.... if he ever lets them have a turn that is!

That's rubbish!

The outside bins have arrived and if you've been on site recently you may have noticed that they have already been installed! JM and TC met with Mr Piner and Mr Williams (site manager) to discuss where the 10 new bins should be positioned. They both did very well during this meeting and put a lot of thought into where they should go.

We all agreed that Mr Piner's ideas were just a load of old "rubbish"!



TB chaired the most recent student council meeting and impressed the school governor present with the way he handled the job, so well-done TB! The next meeting will take place on Thursday 6th July at 3:15pm when the council will be reviewing the year and making plans and who is involved for September!



Celebrating Pride Month: by Aida Walsh

As you may be aware this has been 'Pride' month, so we have been using our PSHE lessons and tutor time for discussions on a range of LGBTQ+ related issues, such as struggles for social justice, as well as highlighting the milestones this cause has achieved so far. This is an important part of our and every school's Personal Development curriculum.

As you can see from the photo below, 'Turquoise' tutor group have been busy creating a display board which included some messages they wrote during the discussions, to show their solidarity, kindness, and respect towards the LGBTQ+ community.





Work Experience round up: [by Phil French](#)

In the library.....shhhh please!

This term, GB one of our Sixth Form students, visited Cheney school to work alongside their librarian. She showed him around library and explained their classification system and the types of books that have available. After a very brief introduction to the computer system, which is called 'Assessit' he oversaw the receiving of books back into the library and then issuing new choices to students. He made sure that any books that were issued had to be date stamped with the return date. On occasions students had overdue books or books on reserve and the computer system needed to be adjusted for this.



He showed excellent communication skills, and was his usual pleasant and polite self throughout. He was also able to stay focused and remain calm when the pressure built up with several students to serve. He spoke with several staff during his visit, including those on reception, the site maintenance team and teachers supervising lessons in the library.

Other tasks included returning books to the correct shelves and spaces, sorting and returning the laptops to the charging unit. Overall, G made a very good impression, so well-done G...there is a bright future ahead of you!





Meanwhile over at 'The Hill' Community Centre



EB has been doing his work experience helping to develop and improve the community garden at 'The Hill' in Banbury, where they are trying to grow seasonal vegetables, develop a nature garden and improve the area for insects. He did a great job of mowing the grass...which wasn't straightforward as it was on quite a steep hill! He also cleared some raised beds of weeds and then refilled them with compost.

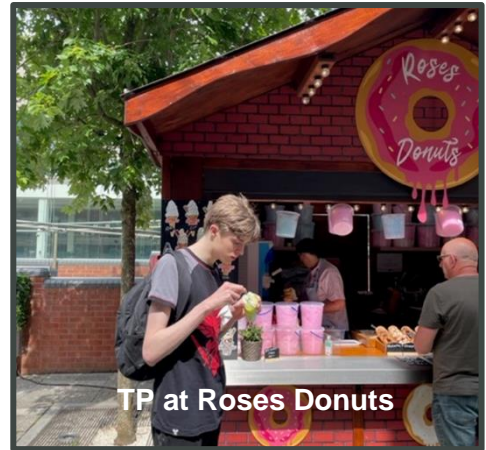
He made some suggestions to the Centre's co-ordinator about some good things to plant for the nature garden area and talked about the correct type of habitat for the bug hotel. To help develop the bug hotel he has been collecting sticks and cones from the school woods to take to the centre.





And for something completely different...

TP recently began his work experience at 'Roses'. During his first week, he spoke with Tammy, the owner, who told him of the various products they sell. He also watched how to use the ice cream maker and prepare doughnuts.



While Sam was busy in the Café....

Congratulations to SW for building on his work placement at Reg's Cafe to secure a job at the Garden Tearooms, where he is now being paid for his work....nice going!!



Greenpower.....driving to more success! by Alan Mayor

As the season progresses it is great to our students working well as a team and being professional during the race meeting. We were delighted when they achieved the 'Best Presented Team' award at Goodwood last month and this trophy has joined our growing collection in the reception area. Well done.....let's keep this show on the road!





'Independence Plus' round-up of the year: by Beth Rolls

As the year draws to a close, we would like to share some of highlights from this year's Independence Programme

All Key Stages

One of the highlights of the year was our Careers Week, where students had the opportunity to explore various jobs through engaging workshops. They attended STEM (Science, Technology, Engineering and Maths) workshops, including a team-building session conducted by ARCADIS construction, which involved construction activities using Lego and other resources.



On another occasion they participated in a 'Thinkers in Education' workshop entitled 'Body in a Box,' immersing themselves in the fascinating world of forensics. They also had a memorable experience in the 'Disaster Relief' STEM workshop led by the Army, where they created a robot to help in a rescue mission, gaining insights into a variety of roles within the armed forces.

The 'Careers Education and Guidance' programme was enriched by some external speakers who shared their insights and experiences. We were fortunate to have Sophie Strudwick from Banbury and Bicester colleges, Greg Powell, a commercial pilot for Virgin Atlantic, and Dave Earle MBE, who founded mental health clinics, visit our school. These speakers provided valuable information about college opportunities, career



pathways, and overcoming challenges, inspiring our students to pursue their ambitions with determination and resilience.



During the Spring term, a number of students successfully completed Level 2 of the 'Bikeability' programme. This achievement demonstrates their ability to ride a bike safely on the road, this two-day course focused on communicating with other road users, navigating junctions, identifying hazards, and following traffic signals.



Gold group students learning about CPR

Health and Safety has been an important issue throughout the year, this included important skills such as pedestrian and passenger safety, as well as online safety protocols.



TP and SM learning pedestrian safety skills

A totally different aspect of safety is First Aid, and as you can see in the picture of some of our Key Stage 4 students, participated in a basic first aid course learning about how to seek medical help, CPR, and the application of bandages and plasters.

Key Stages 3 & 4

Throughout the year, students have completed a course delivered by the Clinical Psychology team, focusing on understanding their "Window of Tolerance" and the 'Hand Model' of the brain. This has helped them develop a deeper understanding of themselves and how to regulate their emotions effectively, in a range of different situations.



JJ and Laura Fuller in The Window of Tolerance work group

Key Stage 4

Our Green, Orange, and Gold tutor groups took on a range of gardening projects throughout the Autumn and Summer terms. These included building planters from recycled materials, planting raised flower beds, and rejuvenating the area near the polytunnel. These gardening activities not only helped develop new knowledge and skills new skills but also promote relaxation and well-being, emphasizing the therapeutic benefits of gardening.



LJ, TC and CK put the finishing touches to a garden planter



Key Stage 5

Several offsite visits were organized to broaden our students' horizons. A group of KS5 students had the privilege of visiting EKFB Civil Engineering, where they gained insights into different job roles,



employability skills, and interview techniques. Another group dedicated their time to volunteering at the Ukrainian Volunteer Appeal Centre, where they exhibited exceptional community spirit by sorting and handling donated clothes.

In addition to this, some were fortunate enough to have work experience placements with Banbury United, our most local football team. During this time they interacted with the general public, handled cash transactions, and honed their time management and initiative-taking abilities.



In February, we were provided with a unique opportunity to explore the judicial process through a courtroom tour. The visit included a really helpful explanation of what happens after a prisoner is sentenced, which proved to be an eye-opener for all of us...and one we never want to experience!





For our Sixth Form students, who are reaching the age where driving can become a consideration, a four-week vehicle maintenance course was organised. This not only provided background knowledge about cars but also emphasized the responsibilities that come with car ownership. As part of this course, the group visited a car showroom in Banbury and had the chance to sit behind the wheel of some impressive vehicles.

Independence and the 4 'Whys'

As one of the 4 'Whys' our focus on 'Independence' across the school is a critical part of the timetable, both during the school day and after school. We would also like to thank all our families for their support in helping to boost independence where possible. Stay tuned for some interesting new developments for next year..... which we look forward to sharing with you.



Independence Plus



"The innovative quality of life framework you have developed has a positive and life-changing impact on pupils and their families"
Ofsted July 2019



A budding 'star' in our midst! by John McDade

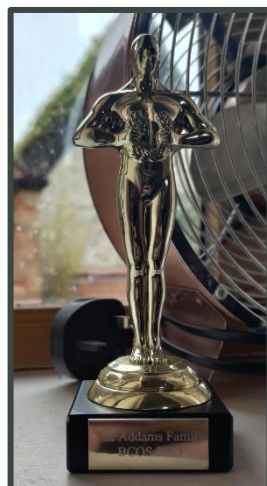
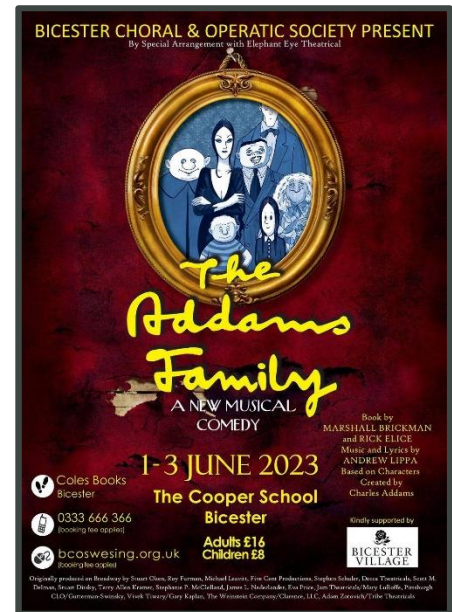
The Bicester Choral & Operatic Society (BCOS) performed a musical comedy stage adaptation of The Addams Family, at the Cooper School in Bicester. Why is that of interest I hear you ask....well our very own Rory Smith (Yr 11) took part in it, playing one of the ancestors to a sellout crowd every night.

The performance tells the story of Wednesday Addams, the ultimate princess of darkness, who is all grown up and has a shocking secret that only Gomez knows. She's fallen in love with a sweet young man from a respectable family. With his cherished Morticia in the dark, will Gomez manage to keep his daughter's secret until the two families meet for a fateful dinner with hilarious consequences?

This is a heart-warming story of love, family, and friendship... with a twist.

Rory was a dead Addams family member acting as a member of the chorus, and an extra in three other scenes, and doesn't he look the part!

This was his debut in an acting and singing role on stage and has ambitions to do more of this in the future....well done Rory we are right behind you....fame beckons!!





Examinations Summer Term by Dean Moulder

The big days for exam results in 2023!

Exam Series	Results Day	Qualifications	Time released to students (and parents)
June 2023	17/8/2023	GCE A Levels BTEC Nationals Functional Skills English	Rory high kicking in the choir line 8:30am
Rory looking pretty scary June 2023	24/8/2023	GCSEs Entry Level Science	8:30am

Summer 2023 exams.

We are pleased to inform you that the Summer 2023 exams have been progressing well. Our students have responded positively to the calm exam environment that we provide, and we are hopeful that all will achieve the results their efforts deserve. With that in mind, please make a note of the exam results dates above. Andrew Sears, Asst Principal Achievement, and Dean Moulder, Exams Officer will be available for support and advise on exam results days.

Accessing 'Exams and Qualifications' on the Parent Portal.

We have uploaded all relevant exam and qualification details on the parent portal and summer 2023 exam results will also be uploaded here. The PowerPoint presentation provided below explains how to access your son's exam and qualification information including exam results via the parent portal. [Exam results 22-23 powerpoint parents.pptx](#)

Additional results services

Sometimes results don't quite go to plan and you may need to consider some of the additional services that are available. These include a clerical check, marking review, moderation review, or obtaining a copy of marked exam papers from the exam boards. All applications for these services must be made through the school, and not directly to the exam boards. For additional information on post-results services, please visit the [WJEC](#), [AQA](#), [OCR](#) and [Pearson](#) websites. Our Exam Appeals Policy can be found on our website.

You can also contact Dean Moulder and Andy Sears after the issue of results for advice and information on these services. We are experienced in navigating them and will be able to advise you if you are unhappy with their results and wish to explore post-results options.

Support

Exam regulations and results
Exam support and pathways:

Dean Moulder (dmoulder@swalcliffepark.co.uk)

Andy Sears (asears@swalcliffepark.co.uk)



Preparing for residentials by Madeleine Saraceni-Gunner

Much work has been done to prepare our students for the upcoming residential trips, the following airport navigation guides have been used as an introduction by Tracey Powell and you might find them useful to download:

[autism-guide.docx](#)

[british-airways-visual-guide \(002\).docx](#)

An example of this is that in preparation for the Barcelona residential trip and to build up his independence and communication skills, Maddie took SB (pictured below) to the Birmingham airport. Both were taken by surprise when they had to use the monorail to travel, this caused some anxiety for SB but he managed to push through his discomforts and successfully reach the departure point. There they were greeted by a member of staff, who took them for a tour around the airport. They were lucky enough to be walked through check-in, security and the departure lounge – as well as introducing them to the assisted travel team. The staff were excellent and answered all the questions that were asked. They also recommended them to go to a local viewpoint where you can observe the take off and landing of the planes. This was an incredible experience. Birmingham airport went above and beyond to ensure that he had a positive experience. As a highly anxious individual, this has been an incredible experience and has contributed to SB's QoL, as well as enabled him to make an informed decision for travelling abroad in the future! Well done.





Residential 2023 - Barcelona

This year for Swalcliffe Park School's residential week, there will be an opportunity for the young people to visit Barcelona. This will help the students of SPS to gain real-world experiences that cannot be taught in the classroom, opening their minds up to different cultures and strengthening their knowledge of the world around them. These are just some of the reasons why something like creating opportunities as such can be beneficial to the young people's educational insight as well as increase their quality of life.

Below are some of the places we intend to visit.



Visit to Gothic Quarter



Visit to Port Vell



Visit to La Sagrada Familia



Visit to Las Ramblas Shopping Area



Visit to La Boqueria Market



Visit to Park Güell



Residential 2023 - Paris

This year for Swalcliffe Park School's residential, there will be an opportunity for young people to visit Paris. Paris is one of the most popular overseas destinations and one of Europe's most iconic cities. The French capital offers an abundance of exciting visits and attractions. An experience here will both expand students' cultural awareness and encourage group bonding too! Below are some of the attractions we intend to visit.



Flights to Charles De Gaulle Airport



Visit to Disneyland Paris



Visit to Montparnasse Tower



Explore Montmartre area.



Visit to Sacre Coeur



Boat Cruise on River Seine



Residential 2023 - Snowdonia

At the heart of the majestic Conwy Valley in North Wales, Surf Snowdonia is surrounded by rivers, mountains, woodlands and wildlife of Snowdonia. The focal point of the Adventure Parc is the world-first inland surf lagoon: head-high waves powering down a 300-metre lagoon. We would be staying in wooden pods on the Surf Snowdonia site and enjoying a range of activities there, as well as off-site, to ensure we have an active and adrenaline-fuelled time.

Some of the activities and places we intend on visiting are...



Surf lessons



Visit to Zipworld



Free time and games in the Tipi



Relaxing in the camping pods



Indoor climbing and slides



Residential Week 2023 – Day Trips

The current plans for day trips are as follows and parents will be contacted soon to confirm the arrangements:

Monday 10th – Cotswold Wildlife Park

Tuesday 11th – Stratford Butterfly Farm and Park

Wednesday 12th – Blenheim Palace

Thursday 13th - Steam Train (Evesham – Toddington – Cheltenham)

Parent Governor update.....could this be you? by Kiran Hingorani

By now you should have received information about the election process for becoming a parent governor. Our thanks to Jenny Rigby, for organising the process and all the relevant information.

Just to provide a bit of context, the school is a charitable body or more formally known as a Charitable Incorporated Organisation (CIO). As such we need a Board of Trustees, who in our case also act as School Governors. This is why they are referred to as Trustee/Governors. They are supported in their work by two members of staff and two parents, who take on the role of school Governors, but without the additional function of being trustees.

We are keen to hear from anyone who is interested in becoming a parent Governor, so please contact Jenny at jrigby@swalcliffepark.co.uk if you have any questions about the role.

Parent Governors are invited to attend our Conference Day meetings, which have both an operational and strategic focus. These are held on the penultimate Thursday of each half term and attendance can be in person or via Teams.

Save the date!

On Friday, July 14th we will be celebrating the end of the school year as well as saying goodbye to our leavers and their families.

This year our 'Leavers' event will be held in the morning on the same day as the 'Family Day' but will be a separate event in Maurice House ...and hopefully the garden if the sun shines on us!

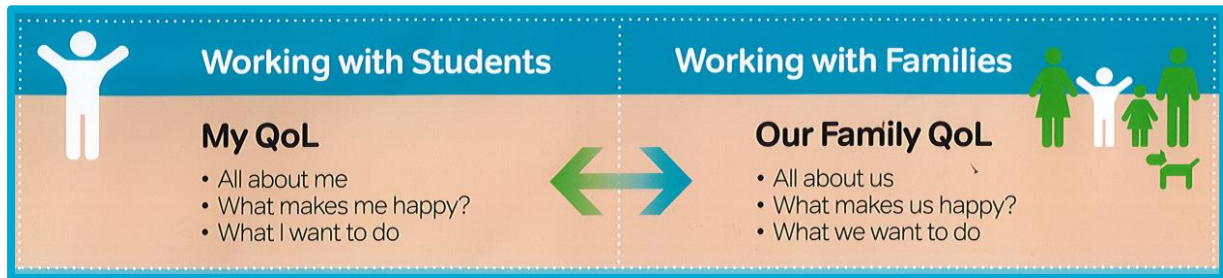
Invitations will be sent out in the coming days with the itinerary, so please keep an eye out if you are part of this group.

Meanwhile, for the whole school community, there will be a wonderful array of activities and things to see for all the family, including inflatables, activities, games, our very own mini music festival, an ice cream van and of course Mark, Manon and Jane will provide us all with another lovely lunch.....what a way to round off another successful year!

The fun starts at 11.00 am and goes on until 2.00 pm.



Working With Families



Family Quality of Life.... more good news sharing!

We always like to include some of the comments from the Family Quality of Life section in the Summer Term Annual Review reports. Naturally, these are lovely comments for us to read, but most importantly they are the result of collaborative working between home and school, through a combination of QoL surveys, keyworking and regular communication. These comments are reflective of the comments made to the inspector on his visit in February.

Before Swalcliffe (he) was extremely withdrawn and lacked confidence, he would struggle to engage in any conversation that wasn't about him and his likes. He struggled to make any decisions and rarely left the house. This has all changed THANK YOU

(He) used to hate going to the dentist and having his hair cut. He would have meltdowns, and we would have to bribe him to go. Now, though still not his favourite activities, he is quite happy to do both without any meltdowns.

(He) will now eat at the table with us at small family gatherings and does not need to eat in a different room as before. This has improved the enjoyment of family social life for all of us.

(His) confidence has really grown. When we visit new places, (he) now talks to other people. (He) went into a shop a few weeks ago and managed to use his birthday money to go up to the counter independently and engage enough to purchase something.

(He) began attending school for the first time in 10 months and progressed to attending full time within 5 months.

We had a meal at Nando's for the first time in 4 years and (he) tried something new!

(He) has learned to ride a bike and started jogging and exercising, which he enjoys. He is pleased by the positive effects it has on his state of mind and on his body. He is becoming more aware of his physical appearance and wants to look healthy.

(He) is happy to return to school on Mondays – he says this is helped by the excitement he feels about GreenPower each week.

We will keep sharing Annual Review comments like those above as they are fabulous illustrations of improvements in 'Quality of Life' and provide powerful evidence in Annual Review reports. Thank you for sharing them with us and to all parents who completed their March/April QoL surveys, your input really helps keyworkers to have a full understanding of how things are at home. Please do not hesitate to contact your keyworker for support if you have any concerns or thoughts about areas of focus for this term or how we might be able to support Family Quality of Life.



Quality of Life Survey

!!! Please check your inbox for our latest Quality of Life survey, this was sent out to parents last Friday, it is important to support the work we do with families under the Quality of Life umbrella.



Looking for volunteers.....another research project: [by Kiran Hingorani](#)

As you are aware we are always keen to find out how well our QoL approach is working, where it is most effective and how it can be improved.

As part of this approach, we also like to work with other practitioners and contribute to the wider body of knowledge and best practice.

We are delighted to have been invited to be involved in another project being led by Prof. Eapen, an international leader in research-based at the University of New South Wales. As part of her work in autism, she wrote the questionnaire which we use with all our students and families as part of our QoL approach.

We will be sending out information about the project before the end of the term, and this involves completing a separate survey from the usual end-of-term QoL questionnaire. We need up to 30 volunteers to complete our part of the study and very much hope that we will be able to attract enough parents to join us!

Poppy, our research associate, will be coordinating the project from our end and liaising with Prof Eapen and her team.

Our thanks in advance and please look out for the project information coming your way!

Residential trips

As you will be aware our residential trips will be taking place in the second week of July. This year we have 3 fabulous venues which are Paris, Barcelona and Snowdonia. If you are unsure of any of the arrangements or have any questions, please ask your keyworker. We want to make sure everyone has all the information they need well in advance so that everyone can be as relaxed as possible and enjoy the trips!

Independence Plus

This term we have been thinking about how we can make our 'Independence Plus' curriculum more interesting in school and more engaging for families. We are also to make changes to our end-of-term and Annual Review reports. We will be busy with this project over the next few weeks and very much look forward to sharing it with you in the first half of next term. One key aspect of the changes is how we can make our reports more helpful to families when discussing why school placements need to be maintained at Annual Review meetings, and providing Local Authorities with a clear and concise view of the levels of independence, compared to mainstream peers. This will be the focus of a Family Forum discussion and also link to the one scheduled on Annual Reviews on October 4th.

Medical matters by Chrissy Stevenson

Sunscreen Protection...a message to families

As the weather gets hotter and we want to enjoy being outside we want to be mindful of skin protection. In school

- Sun cream can be provided by us unless you have requested to provide your own to the staff.
- If you wish to provide your own, then please ensure that your son's name is clearly printed on the bottle.
- We recommend that you provide additional protection for your son e.g. a hat (if possible, with neck protection), sunglasses and a water bottle. We request all parents/carers to apply sun cream to their son before they come into school. All items should be clearly labelled with names.
- We will ensure that all staff understand the importance of sun protection and are positive role models to the students by having discussions about their safety in the sun and wearing suitable clothing, sunglasses, hats and keeping hydrated.

Residential Trips: Medicines and Dietary Requirements and Restrictions

In preparation for the forthcoming residential trips, we have checked the aviation medicine guidelines which state that proof IS required for **ALL** prescribed medications, this can either be a signed letter from your doctor or a signed copy of their prescription, which must include their name, date of birth and the list of all current medicines they will be taking abroad.

Airport staff may also need to open the containers to screen liquids at the security point. If the medicines cannot be identified, i.e., there is no letter of proof or visible pharmacy label on the box/bottle etc., they will be confiscated and disposed of by airport staff.

Could we please have the letter/prescription and all medication in school by **Monday the 3rd of July**.

Please note that all students who are on prescribed medicines will need this information to be able to travel with their medication as we will not be able to make any excuses on their behalf.

If you have any questions about any of the above or anything else of a medical nature, please contact either Chrissy Stevenson (HCM/School Nurse) at cstevenson@swalcliffepark.co.uk or Leila Collins (Medical Admin) on lcollins@swalcliffepark.co.uk

Please don't forget the usual guidelines for sending medication into school and make sure it returns home for the summer holiday!

Prospective Parent Afternoon

Virtual Open Afternoon

Our prospective parent afternoons continue to be well attended and our next event will be held on Wednesday 5th July 2023 at 13:00 pm, so If you know of anyone who would like to attend, please ask them to contact Rachel at rkeeling@swalcliffepark.co.uk. Please note that as usual, this will be an online event to avoid disruption to the smooth and efficient running of the school

Family Forum:

Family Forum

We hope that you have enjoyed the family forum events we have put on this year, including the most recent one hosted by Charles Fraser, earlier this week. We try and match the focus of our events with topics you tell us are of interest or concern...so please keep sending us your suggestions to Chris Heslip, Vice Principal: Pastoral and Family Support at cheslip@swalcliffepark.co.uk

Next event Wednesday 4th October

Although it may seem such a long way off, we are already planning the focus for the first half of the Autumn Term, which will be on Annual Reviews, EHCP outcomes and transition planning. We are increasingly aware of how some Local Authorities are using Yr 11 and Sixth Form Annual Reviews to curtail school placements earlier than students and families would like. So this meeting will focus on how we will be writing reports, the conduct of the Annual Review meeting and document checking any amendments made to ECHPs.

[Click here to join the meeting](#)

There will also be a forum event on some new ways of working with our Independence Plus curriculum.....busy times as ever!

Term Dates



Summer term for students will end on the 14th of July at 14:00pm and we will return to school on Tuesday 5th September at 11:00 am.

The school will break up for the Autumn half term holiday on October 19th, which will also be a Family Day in school.

Working With Partners

What's going on with the QoL network?

This term we have hosted two QoL workshops for network members. Our May meeting was online and our live event was here at school this week. We hosted 22 delegates from schools around the country and spent the day discussing various aspects of developing QoL practice. Main topics for discussion included Independence curriculum planning and delivery in schools, evidence for Annual Review reports and training for all members of school staff, Governors, and families.



The picture below shows Steve Gordon, Blue Planet, talking to the group about the protocols in place IT security around QoL data. Steve explained that each school has its own database so only they could see their student and family information. We are also working with Steve and his team on new ways of recording progress within our 'Independence Plus' curriculum so that it is more relevant and easier to read by families and Local Authorities in Annual review reports. More on this development in the next edition of Headlines and a Family Forum event next term.

We will be convening a working group to develop 3 levels of training in the coming months with a view to introducing this into schools during the next academic year.

If you know of any schools, colleges or children's homes that may be interested in joining our network, please feel free to pass on my details so they can email me on khingorani@swalcliffepark.co.uk



Steve Gordon, Blue Planet speaking to our Quality of Life network partners



Kiran addressing our June QoL workshop

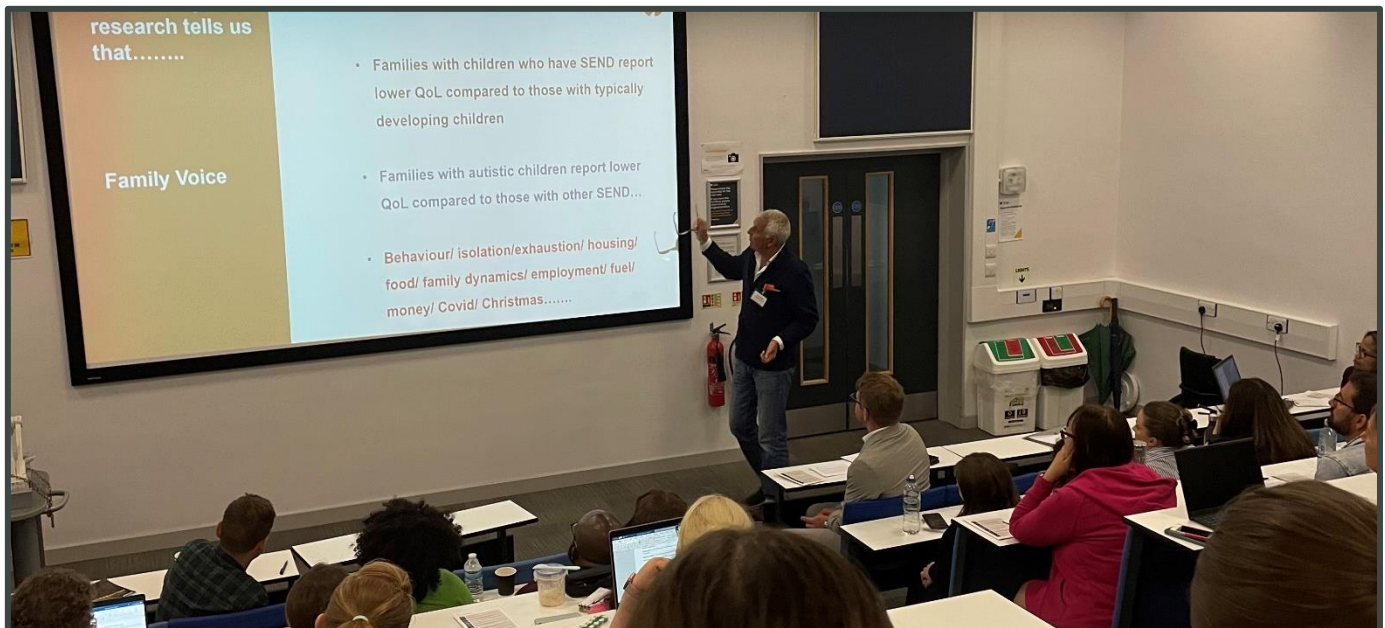
On the road for the Autism Shows

As we mentioned in the previous edition of Headlines, we took our display stand to the London Autism Show at the EXCEL centre. It was a very busy couple of days with a very healthy amount of interest in the school from professionals and families. We were also delighted to have a speaking slot on the main stage this year and used this as an opportunity to share our QoL framework and approach. Next stops on the Autism tour for this year are Birmingham on June 23rd and Manchester on July 7th. The show must go on.....



Not forgetting Suffolk! by Kiran Hingorani

We were also delighted to be invited to speak about our QoL framework and approach at the 'Beyond Autism' conference at Suffolk University this week, which was chaired by Tracie Coultas–Pitman, CEO of Beyond Autism. Tracie has also set up the National Association for Advancing Autism Education, which aims to be a national umbrella organisation for autism education providers and researchers. It may come as a surprise that no such organisation has existed until now, and we are hopeful that this will provide us with a channel through to DfE and other policymakers. Tracie came to visit us at SPS and took part in our May online QoL network meeting. She has invited us to be a founding member of the new organisation, which is an offer we are honoured to take up. More on this exciting new initiative to follow in future editions of Headlines



Working With Resources

QoL network website



We are busy developing a new website for all our QoL information and sharing news about QoL developments going on in our network partner schools. We are hoping this will be up and running by October half term and provide an interesting portal to see how QoL is evolving and spreading as new members join.

Promoting reading across the school

The school summer holiday always provides a good opportunity to spruce up our school buildings and this year is no exception. Mark and his team will be busy painting, mending and overseeing a number of site developments in the grounds as well as inside.

One of the new projects relates to how we can provide more comfortable and attractive spaces which we can promote reading across the school. As part of this we will be upgrading our current school library, and also converting what was the old staffroom, next to the café, into a relaxing area with books, newspapers and magazines. We will also be thinking about how we can make other reading areas across the school. We look forward to showing you the improvements next term!



Any thoughts on this exciting project would be most welcome.....

We have staff news!

As ever at the end of a school year, we have a small number of staff who are moving on to pastures new. Some in education and some into totally new fields!

We wish them all well and sincerely hope that they are happy in their new roles and remember their time at SPS with fondness. Of particular note amongst this group is Rob Leigh, Vice Principal, who has been with us for over 20 years!!

Rob started his SPS career as a member of the residential care team and over the years acquired knowledge and skills and combined this with hard work to lead a house team, then becoming Head of care before taking on the role of Vice Principal.

Many of you will know Rob for his cheerful and thoughtful style, but perhaps not know how much he has done for this school in so many different ways over the years. He will be a great loss to the school but I think we can all agree he has served his time! We wish him well in his new safeguarding role with an international group of schools. On behalf of everyone at SPS now and over the years...well done Rob....and thanks for all you have done to support your staff and improve QoL outcomes for countless students and families.

On the flip side of the coin, we very much look forward to welcoming Lottie Dee-Andrews, who will be joining us officially in September, as Vice Principal: Teaching and Learning. She will be working alongside Chris Heslip: Vice Principal: Pastoral and Family Support and our multi-disciplinary team of Assistant Principals.

We also welcome back Sarah Skelton (Lead SaLT) from her maternity leave, and she will be returning on a 4-day week basis.

In addition to all this

- Sarah Skelton (Lead SaLT) will be back for some of residential week and is returning to work week commencing 17th July, Inset week on a 4-day week basis.

Other staffing news includes:

Leavers	Role	Leave Date	Notes
Michael Gordon	LSA	2 June 23	Management role in Music Business
Adan Wilks	LSA	7 July 23	Accepted on to Train Driver training programme
Laura Fuller	Assistant Psychologist	21 July 23	End of placement
Jallaina Smith	Assistant Psychologist	21 July 23	End of placement
Mark Higgins	Catering Manager via Thomas Franks	21 July 23	Retirement
James Potter	SaLT Assistant	29 June 23	To take up first qualified post, following an Assistant temporary role and placement with us
Rob Leigh	Vice Principal	July 23	Leaving to take up new Role
Daniel Court	Senior Teacher Science	31 August 23	To take up an opportunity as an Asst SENDCO in mainstream secondary school
New Starters/New Appointments	Role	Start Date	
Lottie Dee-Andrew	Vice Principal	1 st Sept 2023	New position
Manon Tachoueres	Catering Manager	1 st Sept 2023	Promotion (Thomas Franks)

We hope you enjoyed catching up on what has been going on and please remember that if you would like to share any information, websites or stories through Headlines please contact Kiran at khingorani@swalcliffepark.co.uk we really would love to hear from you.

Warmest wishes to you all...and we look forward to seeing you all on July 14th for another fabulous family day!

Rob, Rob and Kiran

DIARY DATES

Summer Term 2023	
Residential trips	July 10 th – July 13 th 2023
Family Day/Leavers Day	Friday 14 th July 2023 11:00-14:00
End of term: Students	Friday 14 th July 2023
Bank Holiday (not in term time)	Monday 28 th August
Autumn Term 2023	
Return to school	Tuesday 5 th September 2023 11:00 am
Quality of Life network Workshop	Tuesday 3 rd October (Live)
Family Forum	Wednesday Oct 4 th 18:30 (online)
Progress Day KS3	Wednesday 18 th October 2023 (online)
Family Day	Thursday 19 th October 2023 11:00-15:00 pm
Autumn Half Term	Thursday 19 th October 2023
Return to school	Monday 30 th October 11:00 am
Progress Day KS5	Wednesday 1 st November 2023 (online)
Progress Day KS4	Wednesday 8 th November 2023 (online)
Quality of Life network Workshop	Tuesday 28 ^h November (Online)
Christmas show	Wednesday 20 th December 2023
End of term	Wednesday 20 th December 2023

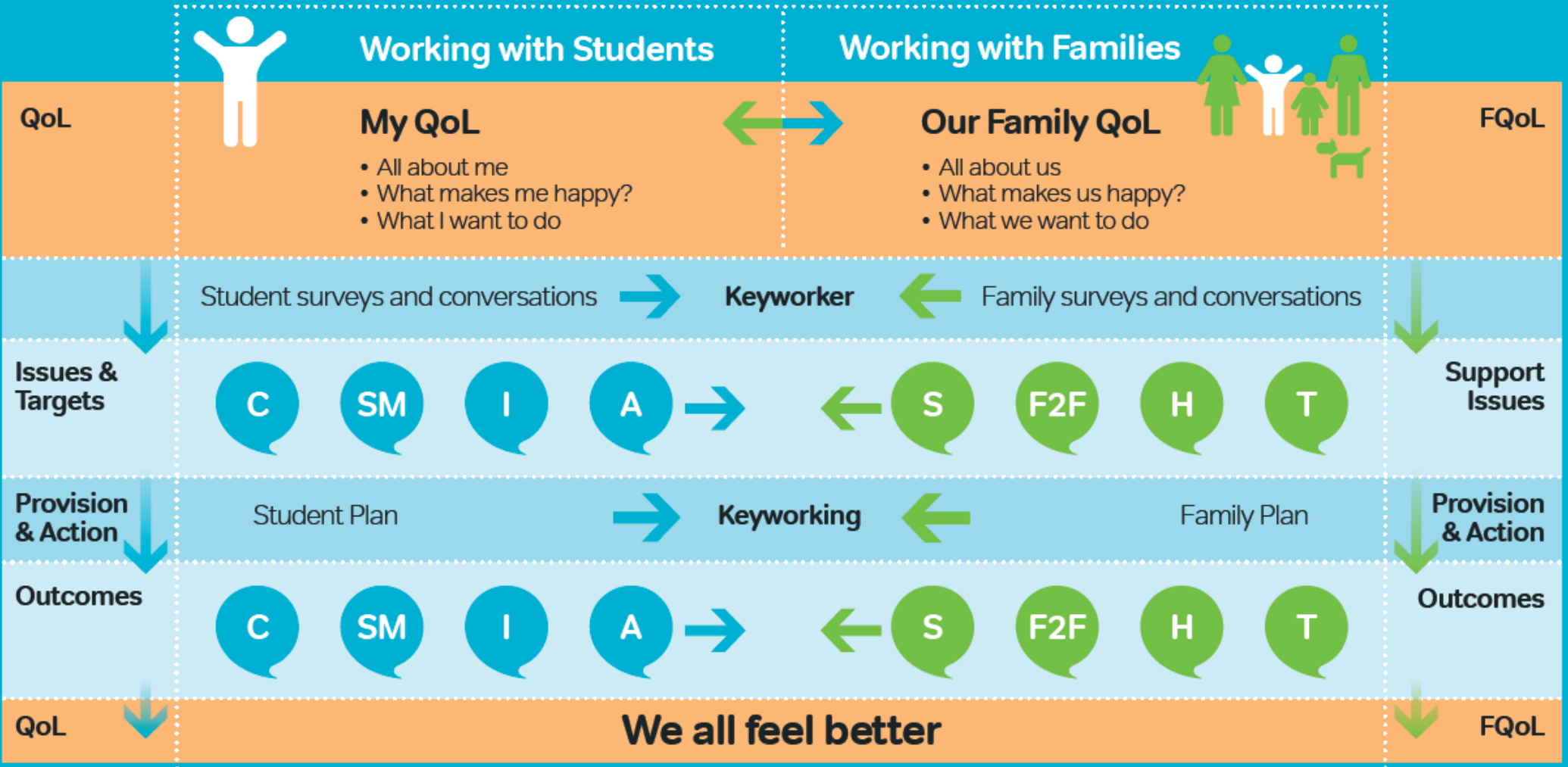
Swalcliffe Park School Term Dates 2022-2023 Students

2022-23	M	T	W	T	F	S	S	M	T	W	T	F	S	S	M	T	W	T	F	S	S	M	T	W	T	F	S	S	M	T								
September				1	2	3	4	5 11 a m	6	7	8	9	10 OUT	11 OUT	12	13	14	15	16	17 IN	18 IN	19	20	21	22	23	24 OUT	25 OUT	26	27	28	29	30					
October						1 IN	2 IN	3	4	5	6	7	8 OUT	9 OUT	10	11	12	13	14	15 IN	16 IN	17	18	19 P D K S 3	20 F D	21	22	23	24	25	26	27	28	29	30	31 11 a m		
November		1	2 P D K S 5	3	4	5 OUT	6 OUT	7	8	9 P D K S 4	10	11	12 IN	13 IN	14	15	16	17	18	19 OUT	20 OUT	21	22	23	24	25	26 IN	27 IN	28	29	30							
December				1	2	3 OUT	4 OUT	5	6	7	8	9	10 IN	11 IN	12	13	14	15	16 Sho w 15:00	17	18	19	20	21	22	23	24	25	26 B H	27 B H	28	29	30	31				
January							1	2 B H	3	4 11 a m	5	6	7 IN	8 IN	9	10	11	12	13	14 OUT	15 OUT	16	17	18	19	20	21 IN	22 IN	23	24	25	26	27	28	29 OUT	30 OUT	31	
February			1	2	3	4 IN	5 IN	6	7	8 P D K S 3	9 F D	10	11	12	13	14	15	16	17	18	19	20 11 a m	21	22 P D K S 5	23	24	25 IN	26 IN	27	28								
March			1 P D K S 4	2	3	4 OUT	5 OUT	6	7	8	9	10	11 IN	12 IN	13	14	15	16	17	18 OUT	19 OUT	20	21	22	23	24	25 IN	26 IN	27	28	29 P A T H	30	31					
April						1	2	3	4	5	6	7 B H	8	9	10 B H	11	12	13	14	15	16	17 11 a m	18	19	20	21	22 IN	23 IN	24	25	26	27	28	29 OUT	30 OUT			
May	1 B H	2	3	4	5	6 IN	7 IN	8 B H	9	10	11	12	13 OUT	14 OUT	15	16	17	18	19	20 IN	21 IN	22	23	24	25	26	27	28	29 B H	30	31							
June				1	2	3	4	5 11 a m	6	7	8	9	10 OUT	11 OUT	12	13	14	15	16	17 IN	18 IN	19	20	21	22	23	24 OUT	25 OUT	26	27	28	29	30					
July						1 IN	2 IN	3	4	5	6	7	8 OUT	9 OUT	10	11	12	13	14 F D/ L D	15	16	17	18	19	20	21	22	23	24	25	26	27	28	29	30	31		
August		1	2	3	4	5	6	7	8	9	10	11	12	13	14	15	16	17	18	19	20	21	22	23	24	25	26	27	28 B H	29	30	31						

Swalcliffe Park School Term Dates 2023-2024 Students

2023-24	M	T	W	T	F	S	S	M	T	W	T	F	S	S	M	T	W	T	F	S	S	M	T	W	T	F	S	S	M	T								
September					1	2	3	4	5 11 a m	6	7	8	9 IN	10 IN	11	12	13	14	15	16 OUT	17 OUT	18	19	20	21	22	23 IN	24 IN	25	26	27	28	29	30 OUT				
October							1 OUT	2	3	4	5	6	7 IN	8 IN	9	10	11	12	13	14 OUT	15 OUT	16	17	18 PDKS3	19 FD	20	21	22	23	24	25	26	27	28	29	30 11 a m	31	
November			1 PDKS5	2	3	4 IN	5 IN	6	7	8 PDKS4	9	10	11 OUT	12 OUT	13	14	15	16	17	18 IN	19 IN	20	21	22	23	24	25 OUT	26 OUT	27	28	29	30						
December					1	2 IN	3 IN	4	5	6	7	8	9 OUT	10 OUT	11	12	13	14	15	16 IN	17 IN	18	19	20 SHOW	21	22	23	24	25 BH	26 BH	27	28	29	30	31			
January	1 BH	2	3	4	5	6	7	8 11 a m	9	10	11	12	13 OUT	14 OUT	15	16	17	18	19	20 IN	21 IN	22	23	24	25	26	27 OUT	28 OUT	29	30	31							
February				1	2	3 IN	4 IN	5	6	7 KS3 PD	8 FD	9	10	11	12	13	14	15	16	17	18	19	20 11 a m	21 PDKS5	22	23	24 IN	25 IN	26	27	28 PDKS4	29						
March				1	2 OUT	3 OUT	4	5	6	7	8	9 IN	10 IN	11	12	13	14	15	16 OUT	17 OUT	18	19	20	21	22	23 IN	24 IN	25	26	27 P/w a y	28	29 BH	30	31				
April	1 BH	2	3	4	5	6	7	8	9	10	11	12	13	14	15 11 a m	16	17	18	19	20 OUT	21 OUT	22	23	24	25	26	27 IN	28 IN	29	30								
May			1	2	3	4 OUT	5 OUT	6 BH	7	8	9	10	11 IN	12 IN	13	14	15	16	17	18 OUT	19 OUT	20	21	22	23	24	25	26	27 BH	28	29	30	31					
June						1	2	3	4 11 a m	5	6	7	8 IN	9 IN	10	11	12	13	14	15 OUT	16 OUT	17	18	19	20	21	22 IN	23 IN	24	25	26	27	28	29	30 OUT	31 OUT		
July	1	2	3	4	5	6 IN	7 IN	8	9	10	11	12 Leavers	13 OUT	14 OUT	15 RES	16 RES	17 RES	18 RES	19 FD/LD	20	21	22	23	24	25	26	27	28	29	30	31							
August				1	2	3	4	5	6	7	8	9	10	11	12	13	14	15	16	17	18	19	20	21	22	23	24	25	26	27	28	29	30	31				

Listening to students and their families to improve 'Quality of Life' outcomes



STUDENT KEY
 QoL = Quality of Life
 C = Communication
 SM = Self-Management
 I = Independence
 A = Achievement

Curriculum, operational and strategic planning

FAMILY KEY
 FQoL = Family Quality of Life
 S = School Support
 F2F = Family to Family
 H = Home Support
 T = Training

“ The innovative quality of life framework you have developed has a positive life-changing impact on pupils and their families. ”

Ofsted July 2019